
North Irish Sea Array (NISA) Offshore Wind Farm

Update Booklet #2 for Fisheries

Q2 2022





Statkraft

■ Background

The North Irish Sea Array, also known as NISA, is an offshore wind energy project proposed off the coast of Dublin, Meath and Louth. Engagement with the fishing industry commenced in 2019 when a Fisheries Liaison Officer (FLO) was appointed. This leaflet follows on from a more detailed leaflet distributed in 2021.

Since our engagement process began, Statkraft has developed our understanding of the fishing industry and the positive impact it has had on our economy and our environment. As an island nation, it is an industry that central to our identity. Statkraft recognises that the fishing industry has had a difficult past but also that it has a future with a lot of challenges to face, not just in terms of the current high diesel prices but also in terms of policy changes in Ireland.

■ Engagement

We believe that it is only with transparent and proactive engagement from all sides that the best outcomes can be achieved. At Statkraft, we see fishers as key stakeholders in this project, and it is important that both sides work as close as possible together, to ultimately deliver a project that that will achieve its full potential in terms of delivering for all parties.

We have several aims when it comes to our communication with you. These include:

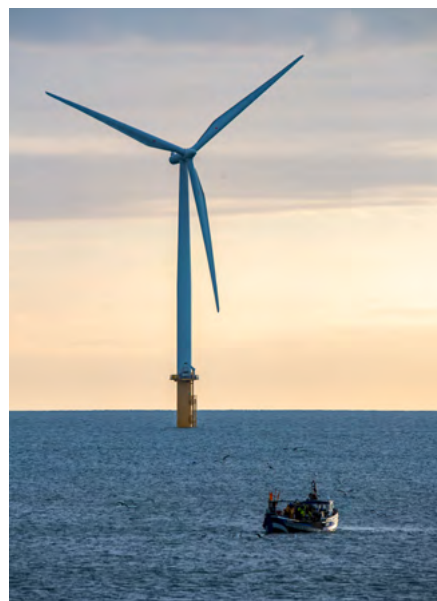
- Understanding what you do and how you make your living
- Providing details so that you will know who to contact if you have any queries
- Providing information on what is being proposed and importantly, getting your feedback
- Establishing the best ways of both industries working in a shared area
- Providing information on planned surveys to avoid or minimise inconvenience
- Developing dialogue to establish best ways of protecting fishing incomes and working with the fishing industry during the operational lifetime of the windfarm to develop the sustainability of the fishing industry

■ Site investigation surveys

NISA is currently at a stage in design where we are gathering relevant information, which will be used to develop our proposals further. Surveys are being carried out – both onshore and offshore – to gain an understanding of what may or may not be considered as design progresses.

NISA was awarded its foreshore licence for the array site area in late December 2021, which allows for offshore surveys to commence. Some survey activities commenced in January 2022 with the deployment of metocean instruments (See Marine Notice 03/2022). It is intended to begin the site investigation work in early May 2022, which will include geo-physical, geo-technical and benthic surveys.

Before a Marine Notice is issued, the project FLO's will ensure the relevant information is communicated to the fishing industry, so that it does not come as a surprise. Marine notices will be issued in advance of works with further details on the activity being carried out at any given time, in any given area.



■ Survey work in practice – when, where and how

These surveys allow NISA to gather information about the sea bed and environmental conditions of the windfarm area being considered. One of the main considerations when planning the work is how to limit disruption to those who already work in the area.

This first phase of work will be limited to the wind farm array site and primarily within the trawling grounds. It is our intention to avoid any of the potting grounds during the initial geophysical and geotechnical survey efforts.

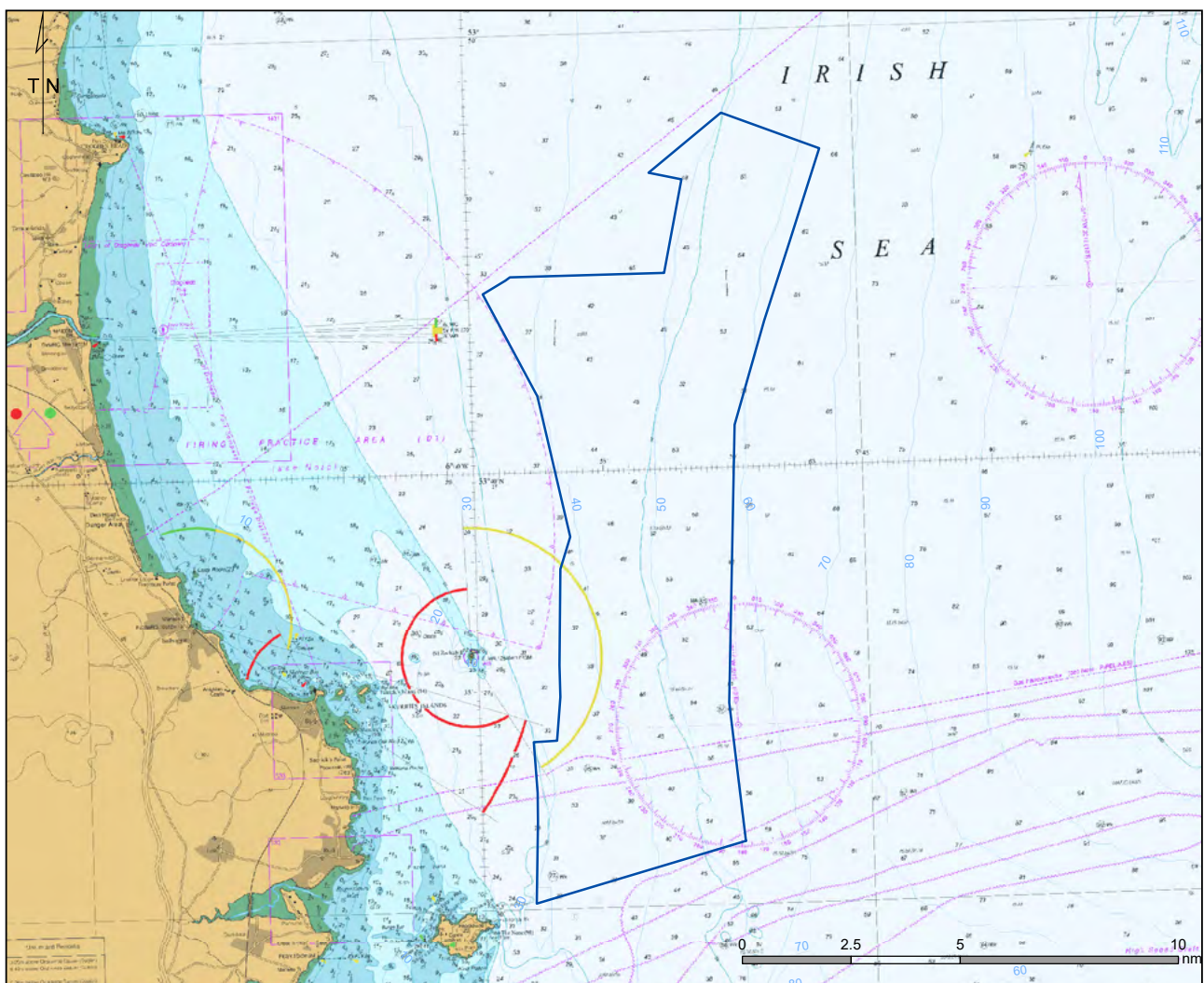
The first of these surveys are due to commence in May 2022. As such, we recognise the importance of engaging with the trawling fleet, amongst others, to provide information and establish clear lines of contact.

We would like to establish how we can best work together to avoid any inconvenience on either side. It is for this reason that we are highlighting our planned works as far in advance as possible.

In addition to providing advance notice, we will:

- Engage a scout vessel which will be used to minimise disruption to both the survey effort and to the fishing activity in the area.
- Propose to carry out a trawl survey both before and after the site investigation works are carried out. This is in the interest of ensuring openness, fairness and transparency in all of our dealings with the fishing industry and we would welcome your feedback on how such a trawl survey could work best.

■ Map



■ NISA can deliver for the fishing community - *Your input will make a difference!*

Working towards achieving successful coexistence with the fishing industry is central to how this project is being developed, constructed, and operated. NISA is endeavouring to ensure that fishing families who depend on an income from the sea, can continue to do.

The challenges that the fishing community face are many, including quotas, Brexit, rising fuel costs and market volatility. NISA has the potential to help overcome some of these pressures and support the fishing community to be more sustainable and resilient into the future. Fishermen tell us two main things - that they just want to fish and that the future is very uncertain for the industry.

The offshore industry can deliver a more sustainable future for the fishing community. We believe that offshore renewable energy can and should support those earning a living from the mutually shared waters. Under the new Offshore Renewable Energy Support Scheme (ORESS), this project will bring with it a multi-million-euro annual Community Benefit Fund which will last for the lifetime of the scheme. We have lobbied on behalf of the fishing industry to ensure that there is a special interest pot of funding available for the fishing industry within the new ORESS terms and conditions.

Maximising this potential is dependent on your input! To make this work best, you need to tell us where you see opportunities. We want to hear your ideas and aspirations and to work with the fishing community to endeavour to capture all opportunities possible.

■ What ideas and suggestions have fishers had?

We have been asking fishers what benefits you would like to see delivered in association with offshore renewable energy projects. NISA would like to work with the fishing community to establish what ideas and concepts might be achievable. Outlined below are some of the ideas that you have already shared.

Harbour Improvements

Fishers would like to see:

- NISA working to identify short term achievable improvements
- Support for longer term development plans



Supporting Sustainability & Diversification

Fishers would like to see:

- The monitoring of the fish stocks fished by the local fleet to provide independent scientific data
- A lesson's learning visit, for local fishermen, to a Lobster Hatchery
- A study to establish if this hatchery would be achievable and of benefit
- Research into what fishery diversification opportunities are available

Welfare, Training and Safety

Fishers would like to see initiatives that:

- Support fishing industry safety training initiatives
- Support and assist the transition to STCW-F*
- Support other marine training initiatives and the development of crew welfare facilities
- Develop potential opportunities for supplementary employment schemes on the back of STCW-F

The above is based on feedback that we have had from engagement with the fishing community.

We want to hear from you! We would hope to be in a position to progress these suggestions further with the fishing community. If there are other opportunities that you think would be of benefit please call your dedicated FLO, **Trudy McIntyre on 087 122 5636**

*Standards of Training, Certification and Watchkeeping for Fishing Vessel Personnel

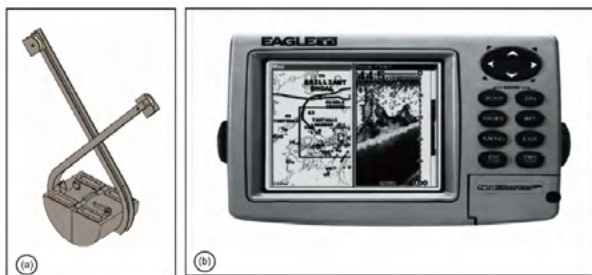
■ Survey overview

Below is an overview of the surveys being carried out within the wind farm site area, as well as the estimated period that they will be taking place.

From our engagement and from fishing surveys we are aware that the SW corner is used for potting. Every effort will be made to avoid this area for the purposes of this particular set of surveys.

Date	Survey	Details	Technology used	Static / Mobile
May 2022	Geophysical	<ul style="list-style-type: none"> Analyses materials on the seabed Non-intrusive 	<ul style="list-style-type: none"> Multibeam Echosounder Side scan sonar Magnetometer Sub bottom profiling 	Mobile
July 2022	Geotechnical	<ul style="list-style-type: none"> Collects samples from seabed Intrusive 	<ul style="list-style-type: none"> Grab samplers Vibrocore Boreholes Core penetration testing 	Static
Ongoing	Oceanographic & Hydrographic	<ul style="list-style-type: none"> Collects wave, tidal and wind data Non-intrusive 	<ul style="list-style-type: none"> MetOcean buoy Wind Lidar buoy Acoustic doppler current profiler (ADCP) 	Static
May 2022	Ecological	<ul style="list-style-type: none"> Collect baseline environmental data for EIA Report Intrusive and non-intrusive 	<ul style="list-style-type: none"> Hamon grab sample Drop down video survey equipment 	Static

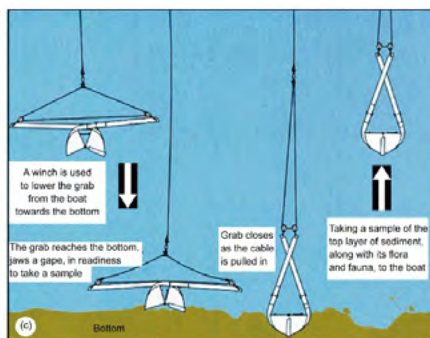
■ Equipment



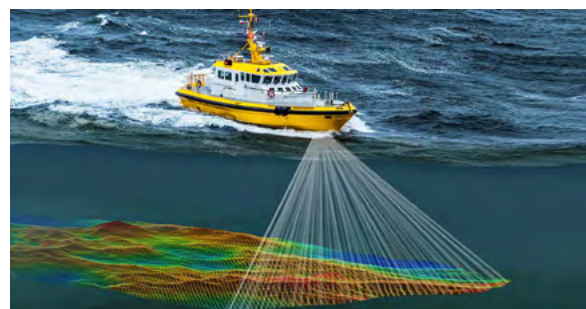
Lidar Buoy | Credit: Fugro



Magnetometer | Credit: Edgeteck



Grab Sampler | Credit: ResearchGate



Multibeam Echosounder | Credit: Verispos

This equipment is similar in nature to that regularly used by the Marine Institute and INFOMAR. For more detailed information on the surveys, technologies used and the Marine Notices, please visit the project website on www.northirishsearray.ie

■ Project Timeline

2019	2020	2021	2022	2023	2024 - 2025	2026 - 2028
Initial engagement with fisheries.	Initial design concept provided	Preliminary design	Offshore site investigation surveys commence	Planning	Construction	Commence operation
Overview of surveys given	Feedback and engagement	Virtual consultation room	Second virtual consultation room	Feedback and engagement	Feedback and engagement	Feedback and engagement
Feedback and engagement		Fisheries leaflet distributed	Feedback and engagement			
		Feedback and engagement				



www.hackettsprint.ie

Contact us

For all fishing related inquiries, please contact our dedicated FLO:

Trudy McIntyre

Phone: 021 203 1006 / 087 1225636

Email: flo@northirishsearray.ie



Privacy Statement

Here at Statkraft we take your privacy seriously and we treat your information with respect. To facilitate environmental safety management systems and to ensure appropriate assessment and development; consultation and domiciliary data within the study area is collected. For more information about how Statkraft processes personal data, please consult our general privacy policy at https://www.statkraft.co.uk/globalassets/1-statkraft-public/global-menu/privacy-statement-external-2018_eng.pdf - or you can also direct any specific questions you have to privacy@statkraft.com